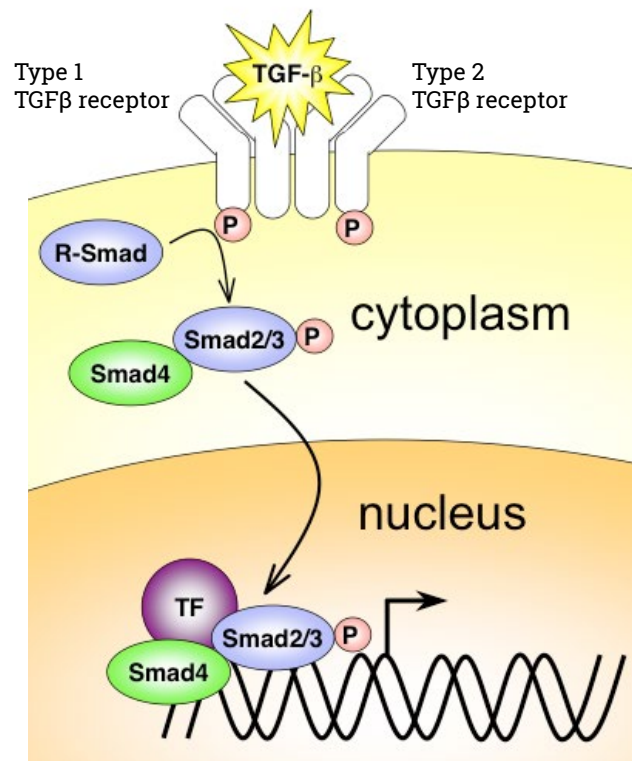
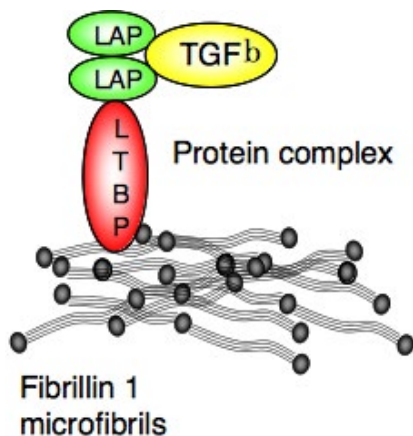


GENE ASSOCIATIONS

This sheet is meant to be a brief overview of the genes associated with Loeys-Dietz syndrome (LDS) and the corresponding clinical features. Information is still evolving and much of the information is based on small populations reported in the literature.

GENES & PROTEINS

Genes encode for proteins, which have certain functions within the cells of the body. The following is an illustration of how the proteins associated with Loeys-Dietz syndrome (and Marfan syndrome) interact.



GENES ASSOCIATED WITH ANEURYSM DISEASE IN THE TGF BETA PATHWAY

- TGFBR1**=transforming growth factor beta receptor 1 (LDS 1)
- TGFBR2**= transforming growth factor beta receptor 2 (LDS 2)
- SMAD3**= mothers against decapentaplegic, drosophila, homolog of, 3 (LDS 3; Aneurysm-Osteoarthritis syndrome)
- TGFβ2**= transforming growth factor beta ligand 2 (LDS 4, aortic aneurysm with MFS-like skeletal features)
- FBN1**=Fibrillin-1 (Marfan syndrome)

Fibrillin-1 binds to a complex of proteins that then binds tgfbeta ligands (molecules). TGFBR1 and 2 are cell surface receptors that are activated (turned on) by the binding of the released TGF-beta ligands. Once activated, the receptors add a phosphate chemical to SMAD2 and 3 proteins to allow association with SMAD4 and subsequent continuing of the tgfbeta signaling pathway. This pathway is responsible for a variety of cell responses including cell movement, proliferation and death.

MUTATIONS

A mutation (change) in any of these genes causes the corresponding protein to not be made or function correctly. Because these varying genes encode for proteins that interact in the same pathway there is clinical overlap in the medical features of people with Loeys-Dietz syndrome even though they may have different mutations in different genes in this pathway.

We will continue to learn more information about the similarities/differences as more people are diagnosed with these gene mutations. There are other TGFβ ligands (TGFB1 and TGFB3) whose contribution to aneurysm development is not currently known. As well, we would expect that more genes encoding for proteins in the tgfbeta signaling pathway will continue to be discovered as causing disorders in humans. Gene mutations in TGFBR1 and 2 were discovered as causing Loeys-Dietz syndrome in 2005. SMAD3 was discovered in 2011, and TGFB2 ligand in 2012.

ASSOCIATION OF GENES WITH CLINICAL PRESENTATION

FEATURE	TGFβR1/2	SMAD3	TGFβ2	FBN1
Cleft Palate / Bifid Uvula	++	+	+	-
Hypertelorism	++	+	+	-
Eye Muscle Problems	+	Unknown	Unknown	-
Lens Dislocation	-	-	-	++
Pectus Deformity	++	++	++	++
Scoliosis	+	+	++	++
Cervical Spine Instability	+	Unknown	Unknown	-
Spondylolisthesis	+	++	+	+
Osteoarthritis	+	+++	+	++
Clubfoot	++	+	++	-
Aortic Root Aneurysm	++	++	++	++
Arterial Tortuosity	++	++	++	- / +
Other Aneurysm / Dissection	++	++	+	
Join Flexibility	++	+	++	+
Hernias	+	++	++	+
Allergic Disease	+	Unknown	Unknown	-
GI Disease	+	Unknown	Unknown	-

+++ = very common
 ++ = common
 + = somewhat common
 - = not reported

BIBLIOGRAPHY

Erkula G, et al. Musculoskeletal findings of Loeys-Dietz syndrome. *J Bone Joint Surg Am.* 2010 Aug 4;92(9):1876-83

Frischmeyer-Guerrero PA, et al. A Mendelian Presentation of and Mechanism for Multiple TH2-Mediated Allergic Diseases (submitted)

In: GeneTests: Medical Genetics Information Resource (database online). Educational Materials: [Loeys-Dietz Syndrome]. Copyright, University of Washington, Seattle. 1993-2011. Available at <http://www.genetests.org>. Accessed [October 31, 2011].

Johns Hopkins University Connective tissue clinic personal experience

Jondeau, et al. TGFB2 mutations cause familial thoracic aortic aneurysm and dissections

associated with mild systemic features of Marfan syndromes. *Nature Genetics*, online publication July 8, 2012.

Lindsey, et al. Loss-of function mutations in TGFB2 cause a syndromic presentation of thoracic aortic aneurysm. *Nature Genetics*. online publication July 8, 2012)

Loeys BL, et al. A syndrome of altered cardiovascular, craniofacial, neurocognitive and skeletal development caused by mutations in TGFBR1 or TGFBR2. *Nature Genet.* 37: 275-281, 2005.

Loeys BL, et al. Aneurysm syndromes caused by mutations in the TGF-beta receptor. *New Eng. J. Med.* 355: 788-798, 2006

Regalado ES, et al. Exome sequencing identifies

SMAD3 mutations as a cause of familial thoracic aortic aneurysm and dissection with intracranial and other arterial aneurysms. *Circ. Res.* 109: 2011

Tran-Fadulu V, et al. Analysis of multigenerational families with thoracic aortic aneurysms and dissections due to TGFBR1 or TGFBR2 mutations. *J. Med. Genet.* 46: 607-613, 2009

van de Laar IMBH, et al. Mutations in SMAD3 cause a syndrome form of aortic aneurysms and dissections with early-onset osteoarthritis. *Nature Genet.* 43: 121-126, 2011

van der Linde, et al. Aggressive Cardiovascular Pheotype of Aneurysms-Osteoarthritis Syndrome Caused by Pathogenic SMAD3 mutations. *J Am College Cardiology* 2012; 60-397-403



TO LEARN MORE ABOUT LOEYS-DIETZ SYNDROME READ THE OTHER FACT SHEETS ON LDS. FIND THEM ONLINE AT THE LOEYS-DIETZ SYNDROME FOUNDATION WEB SITE AT LOEYSDIETZ.ORG